

Guide Book

FREE

# Setagaya

Experience Community Life in Tokyo



Maneki-neko (Gotoku-ji Temple)

## Access

From Shinjuku to Shimo-kitazawa  
From Shibuya to Shimo-kitazawa  
From Shibuya to Sangen-jaya  
From Shibuya to Futako-tamagawa  
Haneda Airport to Futako-tamagawa  
Narita Airport to Futako-tamagawa

10 min. by Odakyu Line  
6 min. by Keio Inokashira Line  
5 min. by Tokyu Den-en-toshi Line  
15 min. by Tokyu Den-en-toshi Line  
45 min. to 1 hr. 30 min. by Tokyu Transsés/Keihin Kyuko Bus  
about 3 hr. by Limousine Bus



世田谷まちなか観光交流協会  
公益財団法人 世田谷区産業振興公社

〒154-0004  
東京都世田谷区太子堂 2-16-7 世田谷産業プラザ 4F  
<https://www.setagaya-icl.or.jp>

2019年9月発行

\* 本冊子に掲載している情報（価格を除く）は、2019年7月のものです。  
\* 本冊子に掲載している価格は、消費税10%を加算した税込価格です。  
飲食料品など、一部8%のものもあります。  
\* 掲載情報は、予告なく変更される場合があります。予めご了承ください。

この事業は、「(公財) 東京観光財団観光まちづくり支援事業助成金」を活用して実施しています。

Setagaya City Tourism Association  
Setagaya Public Corporation for Industrial & Tourism Promotion

Setagaya Sangyo Plaza 4F, 2-16-7 Taishido, Setagaya-ku, Tokyo 154-0004  
<https://www.setagaya-icl.or.jp>

Published September 2019

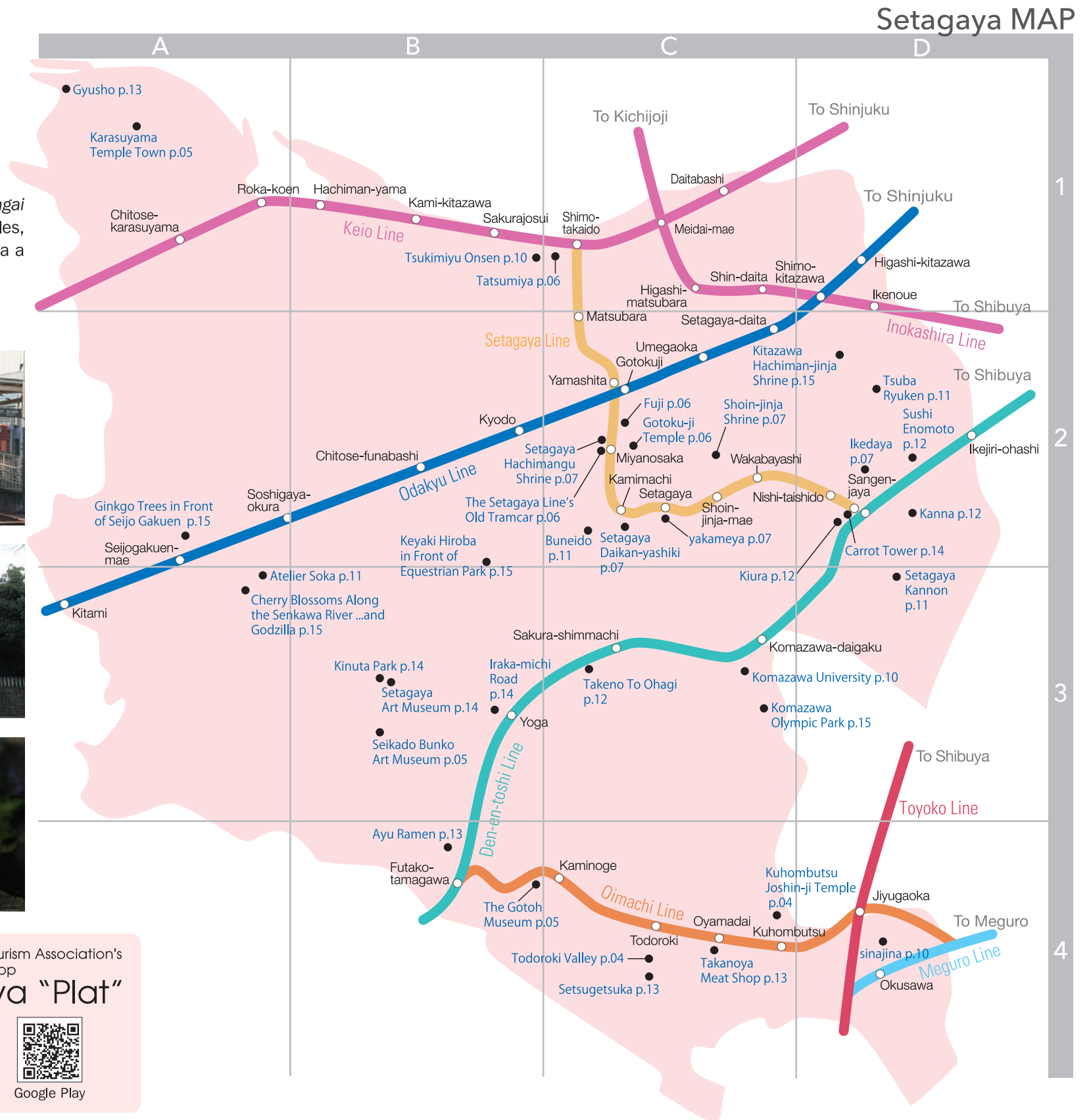
Note:  
\*The information herein (excluding prices) is current as of July 2019.  
\*The prices herein include 10% consumption tax. Some food and beverage items are 8%.  
\*The information herein is subject to change without notice.

# Welcome to Setagaya

Setagaya is conveniently close to Shinjuku and Shibuya, and its bustling *shotengai* (shopping areas) are very popular. Homes alternate with quiet shrines and temples, and there are spots of cultural, artistic, and historical interest, giving the area a unique charm. Take a relaxing walk and find your favorite places nearby.

## CONTENTS

- 02 Welcome to Setagaya
- 04 Visit National Treasures and Famous Spots
- 06 Take a Ride on the Setagaya Line!
- 08 Fun Walking in Shimo-kitazawa Shopping Area
- 10 Experiencing Japanese Culture
- 12 Popular Japanese Dishes and Sweets
- 14 Scenery of Four Seasons



Setagaya Tourist Information Site  
[Enjoy! SETAGAYA]  
<https://www.kanko-setagaya.jp/>  
You can learn how attractive Setagaya is.



SETAGAYA Free Wi-Fi  
Available around locations with this sticker.



Setagaya City Tourism Association's recommended app  
**Setagaya "Plat"**



App Store



Google Play

# Visit National Treasures and Famous Spots

Setagaya has many places of historical interest and scenic beauty, such as a valley with shining fresh greenery, spots for viewing beautiful autumn foliage, and historic temples and shrines. Take your time and enjoy strolling around with this guidebook.



## A soothing oasis near the center of Tokyo Todoroki Valley 等々力渓谷

A well-wooded valley stretches about 1 km along the Yazawa River running toward the Tama River. Visitors can relax and feel comforted by the ever-changing appearance of nature in different seasons, such as when adorned with cherry blossoms or fresh green leaves, watching waterfalls flowing down stone walls covered with moss.

1-22 and 2-37 to 38 Todoroki, Setagaya-ku 3-min. walk from Todoroki Sta. on the Oimachi Line MAP C-4



## Home to nine Buddha statues Kuhombutsu Joshin-ji Temple 九品仏 浄真寺

Founded more than 300 years ago, this temple has three Amida-do halls, each with three Amida Nyorai (Amitabha) statues. There are big ginkgo and Japanese nutmeg trees on the grounds, making the temple a famous spot for viewing autumn foliage.

7-41-3 Okusawa, Setagaya-ku 3-min. walk from Kuhombutsu Sta. on the Oimachi Line 9 a.m.–4:30 p.m. Open 365 days Free MAP C-4



Goshuin is a stamp that you can get at temples (shrines) with the handwritten name of the temple (shrine) and its principal image as a token of worship. At most temples (shrines), it costs a few hundred yen but please note that it is not available at some temples (shrines). After your prayer offering, go to Ryugoden Hall to get a goshuin.

## A wonderful collection of antique Oriental art Seikado Bunko Art Museum 静嘉堂文庫美術館

This museum houses a collection of about 6,500 antique works of art, including paintings, wood carvings, calligraphy, lacquerware, tea ceremony utensils, and swords, with a featured item, “Tea bowl, Yohen Temmoku”, a National Treasure. The museum is open to the public during quarterly special exhibition periods. Along with encountering the precious cultural properties, you can also enjoy abundant nature in the garden.



Tea bowl, Yohen Temmoku (National Treasure)



2-23-1 Okamoto, Setagaya-ku 20-min. walk or 10 min. by bus or taxi from Futako-tamagawa Sta. on the Oimachi or Den-en-toshi Line 10 a.m.–4:30 p.m. (Admission until 4 p.m.) Monday (or Tuesday when Monday falls on a national holiday) Note: Open only during special exhibition periods 1,000 yen (general admission) 03-5777-8600 (operator) <http://www.seikado.or.jp/> MAP B-3

## Splendid museum and garden The Gotoh Museum 五島美術館

This museum's collections include “Genji Monogatari Emaki” (an illustrated scroll of *The Tale of Genji*) and “Murasaki Shikibu Nikki Emaki” (an illustrated scroll inspired by the private diary of Murasaki Shikibu, author of *The Tale of Genji*), both of which are National Treasures. Along with its signature buildings in the Shinden-zukuri style, which was the architectural form for aristocrats' mansion-estates constructed in the Heian period (794–1185), the museum has a beautiful, extensive garden.

3-9-25 Kaminoge, Setagaya-ku 5-min. walk from Kaminoge Sta. on the Oimachi Line 10 a.m.–5 p.m. (Admission until 4:30 p.m.) Monday (or Tuesday when Monday falls on a national holiday), during the time of changing exhibitions, summer maintenance periods, New Year holidays, etc. 1,000 yen (general admission; additional fees for special exhibitions) <https://www.gotoh-museum.or.jp/> MAP B-4



Photo by Shigeo Ogawa



Myoju-ji Temple



## Peaceful places surrounded by nature Karasuyama Temple Town 烏山寺町

This temple town is also called “Little Kyoto in Setagaya,” with 26 temples in a tranquil setting. The temples are worth a visit, including Myoju-ji Temple with a beautiful garden and lots of trees.

2 Kita-karasuyama and 4 to 6 Kita-karasuyama, Setagaya-ku 15-20 min. walk from Chitose-karasuyama Sta. on the Keio Line Free MAP A-1

# Take a Ride on the Setagaya Line!



The Setagaya Line is a streetcar line running at a leisurely speed for about 5 km between Sangen-jaya Station and Shimo-takaido Station; it passes through 10 stations over 17 to 18 minutes. Along the line, there are many interesting spots to visit, including famous historic sites such as Gotoku-ji Temple and Shoin-jinja Shrine, and delicious patisseries, providing fun places to stroll around while eating.



**Popular with foreign tourists, too, with its maneki-neko legend**

## Gotoku-ji Temple 豪徳寺

In Japan, *maneki-neko* (beckoning cat) figurines are known as an auspicious item beckoning luck. Gotoku-ji Temple is said to be the place where *maneki-neko* originated and is thus a popular photo spot. Numerous *maneki-neko* figurines are offered to the temple by people in return for answered prayers. A cat holding up its right paw shows the pose of inviting good luck.

1-24-7 Gotokuji, Setagaya-ku 5-min. walk from Miyanosaka Sta. on the Setagaya Line From spring to autumn, 6 a.m.-6 p.m. (Information desk open 8 a.m.-5 p.m.); from autumn to spring, 6 a.m.-5 p.m. (Information desk open 8 a.m.-4:30 p.m.) Open 365 days Free 03-3426-1437 C-2



## Delicious handmade Satsuma-age

### yakameya や亀や

Satsuma-age is a Japanese-style deep-fried fish ball made from *surimi* (fish paste) with cheese, meat, or vegetables. All products are handmade and available from 32 yen per piece. "yakameya" does not use eggs or wheat flours to stick the ingredients together, so it is safe for those with related allergies.



1-14-16 Setagaya, Setagaya-ku 2-min. walk from Setagaya Sta. on the Setagaya Line Noon - 7 p.m. Sunday, 1st, 3rd and 5th Monday, Monday that falls on a national holiday 03-6319-8988 https://www.rakuten.co.jp/yakameya/ C-2



## Home of the god of learning

### Shoin-jinja Shrine 松陰神社

Shoin-jinja Shrine is dedicated to the worship of Yoshida Shoin, a great thinker in 19th-century Japan. Shoin was also an educator who taught many politicians and is referred to as "the god of learning." Charms embroidered with letters written in his own hand are popular souvenirs (1,000 yen).

4-35-1 Wakabayashi, Setagaya-ku 3-min. walk from Shoin-jinja-mae Sta. on the Setagaya Line 7 a.m.-5 p.m. The office closes irregularly. Free 03-3421-4834 https://www.shoinjinja.org C-2



Shimo-takaido

Matsubara

Yamashita

Miyanosaka

Kamimachi

Setagaya

Shoin-jinja-mae

Wakabayashi

Nishi-taishido

Sangen-jaya

## See trains from bygone eras

### The Setagaya Line's Old Tramcar

世田谷線旧車両

The Setagaya Line is one of a few existing streetcar lines in Tokyo. The old tramcar, which once ran through the town, is now sitting next to the platform at Miyanosaka Station. The carriage is always open to the public, providing a place to rest and relax.

1-24-6 Miyasaka, Setagaya-ku Immediate outside Miyanosaka Sta. on the Setagaya Line 9 a.m.-5 p.m. C-2



1-29-18 Setagaya, Setagaya-ku 5-min. walk from Kamimachi Sta. or Setagaya Sta. on the Setagaya Line C-2 Note: Visiting is not allowed due to construction until the end of November 2019 (planned).

## A spot to experience history

### Setagaya Daikan-yashiki

(magistrate's residence) 世田谷代官屋敷

This private residence of the Oba Family, which was rebuilt in the 18th century, is known as "Oba Daikan-yashiki" (*daikan* means "magistrate," one of the posts of the military government). It is located on the same street where Boro-ichi Market takes place every year January 15-16 and December 15-16. The market features antiques, miscellaneous goods, and food.



## People lining up for taiyaki pastry

### Tatsumiya たつみや

One of the most popular *taiyaki* stores in Setagaya. *Taiyaki* is a fish-shaped pancake with a crispy exterior and a filling of delicious red bean paste.

5-31-1 Akatsutsumi, Setagaya-ku 3-min. walk from Shimo-takaido Sta. on the Setagaya or Keio Line 10 a.m.-6:30 p.m. Tuesday and July to early September 03-3324-9175 C-1



## Try delicious sweet potatoes

### Fuji 焼き芋専門店 ふじ

A rare store specializing in many varieties of *yakiimo* (baked sweet potato). Try various kinds and see which you like. \*The number of varieties is less during spring and summer.

1-7-11 Gotokuji, Setagaya-ku 4-min. walk from Yamashita Sta. on the Setagaya Line or Gotokuji Sta. on the Odakyu Line 10 a.m.-6 p.m. or until sold out Thursday 03-6413-7215 http://f-yakiimo.com/ C-2



## Experience the atmosphere of sumo

### Setagaya Hachimangu Shrine 世田谷八幡宮

Located very close to Miyanosaka Station, Setagaya Hachimangu Shrine is the head shrine of Setagaya area's *chinju-sha* (tutelary shrines). It has been active in staging *hono-zumo* (ceremonial sumo tournaments) since the Edo period, hosting one of the three major sumo competitions held at shrines in Tokyo. Its annual *hono-zumo* tournament is still held in autumn.

1-26-3 Miyasaka, Setagaya-ku 1-min. walk from Miyanosaka Sta. on the Setagaya Line The shrine is always open for people offering prayers. Open 365 days Free 03-3429-1732 C-2

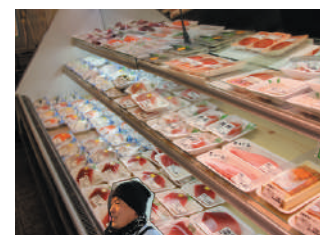


## Buy fresh fish

### Ikedaya 池田屋

A fish store in the traditional style, with high-spirited shouting of sellers. It holds a tuna-cutting performance at 2:30 p.m. every Sunday, when you can buy delicious tuna. The shop sells not only fresh seasonal fish but also a variety of *bento* (box lunch).

2-25-6 Taishido, Setagaya-ku 3-min. walk from Sangen-jaya Sta. on the Setagaya or Den-en-toshi Line 10:30 a.m.-7 p.m. Wednesday 03-3421-6536 http://osakananomise-ikedaya.co.jp/ C-2



# Fun Walking in Shimo-kitazawa Shopping Area

1



## Make your own seasoned rice porridge bio ojiyan cafe Shimokitazawa

bio ojiyan cafe 下北沢店

This cafe features *ojiya* (rice cooked in soup) with egg, sausage, deep-fried bread, and *nori* (seaweed). You can customize *ojiya* as you like by ordering additional toppings, including *mentaiko* (seasoned pollock roe), *jako* (dried whitebait), and *natto* (fermented soybeans), and fried chicken.

📍 5-35-25 Daita, Setagaya-ku  
 🚶 3-min. walk from Shimo-kitazawa Sta. on the Odakyu or Inokashira Line  
 🕒 11 a.m. - 11 p.m. (Last order at 9:50 p.m.)  
 🚫 No fixed holiday



2

## Thick matcha green tea-flavored shaved ice Shimokita Chaen Oyama

しもきた茶苑大山

A Japanese-tea specialty shop with two staff members who have earned the top rank for the *chashi* (tea master) certificate and possess full knowledge of Japanese tea. The cafe on the second floor offers *kakigori* (shaved ice with various syrup toppings) throughout the year, including Bito-matcha (lightly sweetened *matcha*; 1,265 yen) made with high-grade *matcha* from Uji, Kyoto.

📍 2-30-2 Kitazawa, Setagaya-ku (1F: shop; 2F: cafe) 🚶 2-min. walk from Shimo-kitazawa Sta. on the Odakyu or Inokashira Line  
 🕒 1F: 10 a.m. - 8 p.m. (until 6 p.m. on Wednesday); 2F: 2-6 p.m. (until 7 p.m. on Thursday) 🚫 1F: Jan. 1 (also shorter business hours during the New Year period); 2F: No fixed holiday (For details, please check the website.) Note: A numbered ticket is required for the cafe. Distribution of tickets starts at 1 p.m. or earlier 🌐 <https://shimokita-chaen.com/>



## If you love music, this is the place for you Flash Disc Ranch

Opened in 1982, this spacious record store sells discs in various genres, including rock, soul, and jazz, as well as post-punk and hip-hop. The shop's fans include many famous DJs and recording artists.



📍 Misuzu Bldg. 2F, 2-12-16 Kitazawa, Setagaya-ku 🚶 3-min. walk from Shimo-kitazawa Sta. on the Odakyu or Inokashira Line 🕒 Monday through Friday noon-10 p.m.; Saturday: 2:30-10 p.m.; Sunday: 2:30-9 p.m.; special sale days: 3-9 p.m.  
 🗓️ Wednesday 📞 03-3414-0421  
 🌐 <https://www.facebook.com/flashdiscranch/>



Shimo-kitazawa is known as a subculture town, crowded with concert houses, theaters, book stores, used clothing stores, and hair salons. It is also a perfect area for enjoying food as you walk around, with ramen shops, curry restaurants, and Japanese-tea specialty shops.



5

## A great gathering of unique secondhand clothes NEW YORK JOE EXCHANGE®

A used clothing store in a renovated old public bath building. It also sells secondhand bags, shoes, and accessories. All items in the store cost less than 10,000 yen, with an average price of 2,000 yen. You're sure to find a great deal!

📍 3-26-4 Kitazawa, Setagaya-ku 🚶 5-min. walk from Shimo-kitazawa Sta. on the Odakyu or Inokashira Line  
 🕒 Noon-8 p.m. 🗓️ Dec.31-Jan.3 🌐 <http://newyorkjoeexchange.com/>



6

## A bookstore—with beer! B&B 本屋B&B

B&B 本屋B&B

This is a bookstore, yet you can order drinks, including draft beer (500 yen), offering a place where you can look for books with a drink in your hand. It holds daily discussion events with authors and editors.

📍 Big Ben B1F, 2-5-2 Kitazawa, Setagaya-ku 🚶 3-min. walk from Shimo-kitazawa Sta. on the Odakyu or Inokashira Line  
 🕒 Noon-11 p.m. 🗓️ New Year holidays and special occasions 📞 03-6450-8272 🌐 <http://bookandbeer.com/>



4

## Enjoy a drink with your food Spice Kitchen MOONA

A curry restaurant where you can also enjoy drinking. It offers set menus of curry for lunch and a variety of small dishes at night. Popular offerings include two kinds of seasonal curry, bean curry, a seafood lunch set with a vegetable dish (1,700 yen, 10 servings per day), and "veg. set" (1,100 yen).

📍 2-12-13-5F Kitazawa, Setagaya-ku 🚶 1-min. walk from Shimo-kitazawa Sta. on the Odakyu or Inokashira Line 🕒 Tuesday through Friday: 11:30 a.m.-3 p.m. and 6-11 p.m. (Last order 10 p.m.); Saturday, Sunday, and holidays: noon-4 p.m. and 6-11 p.m. (Last order 10 p.m.) 🗓️ Monday (Note: Shop may close if supplies sell out.) 🌐 <http://www.moona.jp/>



7

## Nightspot also popular with locals Suzunari Yokocho Street

鈴なり横丁

Suzunari Yokocho is located on the first floor of Shimo-kitazawa The Suzunari, a small theater that gave Shimo-kitazawa the name "town of theater." It has more than 10 bars and restaurants selling alcoholic beverages. Visit here and enjoy the hidden charm of Shimo-kitazawa.

📍 1-45-15 Kitazawa, Setagaya-ku 🚶 5-min. walk from Shimo-kitazawa Sta. on the Odakyu or Inokashira Line 🗓️ Business hours and holidays depend on individual stores.

# Experiencing Japanese Culture

Get ready to experience Japanese culture, including *zazen*, *ikebana*, *sento*, and *asaichi*.



## Try the basics of Zen practice

### Zazen (Komazawa University) 坐禅 (駒澤大学)

Komazawa University offers Sunday lectures (500 yen per session) related to Buddhism and Zen. The program consists of two parts: a practical session of *zazen*, which is one of the basic practices of Zen, and a lecture about interpretation of Buddhist sutras and Buddha statues. You can also join either the *zazen* session or lecture. Zazen sitting meditation introductory class for beginners is held (irregularly). \*Those all Zen practices are only in Japanese.

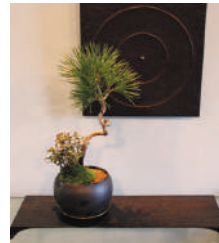
📍 1-23-1 Komazawa, Setagaya-ku 🚶 10-min. walk from Komazawa-daigaku Sta. on the Den-en-toshi Line 🕒 9-10 a.m. (zazen session), 10-11 a.m. (lecture) 🗓 Monday through Saturday (held only on Sunday). Note: Please check the schedule on the website. If you are joining for the first time, please arrive at the venue by 8:30 a.m. (for an explanation of zazen etiquette). 🌐 <https://www.komazawa-u.ac.jp/lifelearning/sunday-lecture/> 🗺 C-3

## Appreciate nature in a pot

### Bonsai Classes (sinajina) 盆栽教室 (品品)

*Bonsai* is a hobby in which miniature trees or plants are cultivated in a pot or container for aesthetic appreciation. A specialty *bonsai* store offers classes where you can learn about the fundamentals of the craft, creating a complete landscape from seasonal seedlings. After completing your *bonsai*, you can take it home. The beginners' basic course is 7,150 yen (including cost of materials) per session (English available).

📍 2-35-13 Okusawa, Setagaya-ku 🚶 5-min. walk from Okusawa Sta. on the Meguro Line, 6-min. walk from Jiyugaoka Sta. on the Toyoko or Oimachi Line 🕒 10 a.m.-7 p.m. (store) 🗓 Wednesday (store). Note: Please check the website for the schedule of bonsai classes 📞 03-3725-0303 🌐 <https://www.sinajina.com/> 🗺 D-4



## An art in which flowers and plants are arranged in a vase or other receptacle

### Ikebana Classes (Atelier Soka) 生け花教室 (アトリエ双香)

*Ikebana* is the art of arranging flowers and other materials and appreciating the beauty they create. Atelier Soka offers *ikebana* classes in English. Trial lesson: 10,000 yen (including cost of flowers and materials)

📍 5-17-16-105 Kinuta, Setagaya-ku 🚶 5-min. walk from Soshigaya-okura Sta. on the Odakyu Line 🕒 10 a.m.-5 p.m. Note: Please check the website for class schedule. 🌐 <https://www.atelier-soka.com/english/> 🗺 A-3



## Shop on the grounds of a temple

### Asaichi (Setagaya Kannon) 朝市 (世田谷観音)

Setagaya-san Kannon-ji Temple, commonly called Setagaya Kannon, holds an *asaichi* (morning market) on the second Saturday of every month. You can buy fresh vegetables from Chiba and Ibaraki prefectures as well as *tsukemono* (Japanese pickles).

📍 4-9-4 Shimouma, Setagaya-ku 🚶 15-min. walk from Sangen-jaya Sta. on the Setagaya or Den-en-toshi Line 🕒 Asaichi market 6-8:30 a.m. 🗓 Held only on the second Saturday of every month (the temple is open for prayers every day 6 a.m.-5 p.m.) 🆓 Free for temple entrance 📞 03-3410-8811 🗺 D-3

## See and Buy Traditional Craft Culture

You can watch the production of traditional Japanese crafts, such as the polishing of swords and the making of sword guards, and also buy the products.



### Tsuba Ryuken 現代鐺工 隆剣

This production studio also serves as a gallery. *Tsuba* is the iron guard at the end of the grip of a *katana* (Japanese sword) to protect the user's hands. Prices range from 15,000 yen to 25,000 yen. The studio is open only for people who are planning to purchase *tsuba* (free admission, reservation required by the day before the visit). Tsuba Ryuken participates in the Boro-ichi Market every year.

📍 2-23-1 Mishuku, Setagaya-ku 🚶 11-min. walk from Ikenoue Sta. on the Inokashira Line 🗓 Need to confirm by phone. 📞 090-3535-6351 (in Japanese only) 🌐 <http://tsubaryuken.com/> 🗺 D-2



### Japanese Sword Polishing Buneido

#### 美術刀剣研処 世田谷文永洞

The *togishi* (sword polisher) has a dual mission: to give a sword its sharpness as a bladed weapon and to enhance its beauty as an object of art. The fee for polishing depends on the sword's condition, but usually ranges from 5,000 yen to 12,000 yen per 3.3 cm. Tours are also offered (free admission, phone reservation required).

📍 5-16-17 Tsurumaki, Setagaya-ku 🚶 8-min. walk from Kamimachi Sta. on the Setagaya Line 🕒 11 a.m.-8 p.m. 🗓 Thursday 📞 03-3439-5061 🌐 <http://setagayabuneido.com/> 🗺 C-2

## Let's Go to Sento!

In addition to bathing, *sento* (public bath facilities) have long been places for social interaction among people in Japan. In Setagaya, there are more than 20 *sento* facilities. Immerse yourself in a big bath and you will be able to release the tension from your body and truly relax.

### Rules and Etiquette at Sento

A *sento* is a place where many people gather. For everyone to be able to enjoy a comfortable space, there are some rules. The following are the main ones. Please keep them in mind and enjoy *sento* together with others.

- Wash yourself before getting into a bathtub.
- Be careful not to splash other people with water from your shower.
- Do not bring a towel into the pool.

Note: For details, please visit: <https://www.setagaya1010.tokyo/rule/>

### Tsukimiyu Onsen

#### 月見湯温泉

This *sento* has baths filled with natural hot-spring water, which is said to warm up your body effectively and make your skin smooth. The cold-water bath, which is popular among sauna fans, also uses natural hot-spring water.

📍 5-36-16 Akatsutsumi, Setagaya-ku 🚶 6-min. walk from Shimo-takaido Sta. on the Setagaya or Keio Line 🕒 3:30 p.m.-midnight 🗓 Tuesday 📞 470 yen (adults), 180 yen (elementary schoolchildren), 80 yen (preschoolers) 📞 03-3321-6738 (Please contact in the afternoon) 🗺 B-1

The natural hot-spring water is heated, filtered and circulated.





**All-natural products**  
**Sushi Enomoto** 鮨処 榎本

This restaurant with traditionally trained sushi chefs serves only sushi made with natural seafood, including the highest-rank sea urchin and bluefin tuna. At the counter, you can watch the chef's techniques right in front of you. A sushi set for one person costs 3,300 yen (Lunch Hour).



3-29-3 Ikejiri, Setagaya-ku  
10-min. walk from Sangen-jaya Sta. on the Setagaya or Den-en-toshi Line  
11:30 a.m.-2 p.m. and 5-11 p.m.  
Wednesday 03-3424-9601  
MAP D-2



**Seasonally flavored shaved ice**  
**Kanna** 和kitchen かな

A place where you can enjoy *kakigori* (shaved ice with syrup topping) anytime throughout the year. One of its most popular items, Kori-shiruko (800 yen), made from Japan's rare natural ice, has a beautiful appearance and a hint of saltiness in the sweet red bean paste.



Coms Shimouma 2F, 2-43-11 Shimouma, Setagaya-ku  
12-min. walk from Sangen-jaya Sta. on the Setagaya or Den-en-toshi Line  
11 a.m.-7 p.m. (Business hours are extended during summer)  
Wednesday 03-6453-2737  
MAP D-2

**100 types of sake to choose from**  
**Kiura** 氣ウラ

Located in a renovated 60-year-old house, this restaurant serves *teppanyaki* (food cooked on an iron grill) along with a selection of more than 100 varieties of sake. The popular meat dishes, such as lightly roasted beef and chicken, pair well with the drinks.



Kiura Bldg. 1F/2F, 2-14-21 Sangen-jaya, Setagaya-ku  
2-min. walk from Sangen-jaya Sta. on the Setagaya or Den-en-toshi Line  
5:30 p.m.-2 a.m.  
Open 365 days  
MAP D-2

# Popular Japanese Dishes and Sweets

Setagaya is home to many popular restaurants and cafes, including those serving such typical Japanese food as *wagyu* beef, sushi, and sake, and ones serving sweets like *ohagi* and *kakigori*.



**Colorful handmade ohagi sweet rice balls**  
**Takeno To Ohagi** タケノとおはぎ

*Ohagi* is a Japanese sweet consisting of a sticky rice ball that's typically covered with sweet red bean paste. This specialty shop sells a variety of uniquely colorful *ohagi*, decorated with various toppings such as pumpkin and nuts. (The ingredients vary according to the season.) From 180 yen each

1-21-11 Sakura-shimmachi, Setagaya-ku  
7-min. walk from Sakura-shimmachi Sta. on the Den-en-toshi Line  
Noon-6 p.m. (closed when sold out)  
Monday and Tuesday  
MAP C3



**Must-try Japanese sweets and lush greenery**  
**Setsugetsuka** 雪月花

A cafe at Todoroki Fudosen Temple in Todoroki Valley. Enjoy *kuzumochi* (*mochi* dessert cake made of *kuzuko* starch with sweet toppings, available Saturdays and Sundays, 500 yen), *matcha* (500 yen), *anmitsu* (a dessert made with agar jelly, fruit, red bean paste, etc., 500 yen), *ramune* (carbonated soft drink, 200 yen).



1-22-47 Todoroki, Setagaya-ku  
10-min. walk from Todoroki Sta. on the Oimachi Line  
11 a.m.-4 p.m.  
Closed in case of severe weather, and on weekdays from late December to mid-March  
03-3705-8137  
MAP C-4

**Enjoy popular croquettes**

**Takanoya Meat Shop** 高野屋精肉店

This shop sells only the highest-quality products, including premium wagyu beef and brand-name pork. The popular homemade korokke (croquette), which is made with Japanese Black Wagyu and Iwate's Iwachu Pork and deep-fried in lard of Iwachu Pork, is cooked and sold at the storefront (140 yen).



3-21-5 Oyamadai, Setagaya-ku  
3-min. walk from Oyamadai Sta. on the Oimachi Line  
8:30 a.m.-7 p.m.  
Tuesday  
03-3701-3452  
MAP C-4



**Ramen noodles with a whole sweetfish**  
**Ayu Ramen** 鮎ラーメン

Ayu Marugoto Ramen is a truly unique noodle dish that, as its name suggests, comes topped with a whole dried ayu (sweetfish); variations are also available with half and quarter ayu.



Tamagawa 3-chome Mansion 102, 3-15-12 Tamagawa, Setagaya-ku  
5-min. walk from Futako-tamagawa Sta. on the Den-en-toshi or Oimachi Line  
11:30 a.m.-2:30 p.m. (or until sold out) and 6 p.m. until sold out  
No fixed holiday  
MAP B-4



Kita-karasuyama Rotary Mansion 1F, 7-30-32 Kita-karasuyama, Setagaya-ku  
22-min. walk from Chitose-karasuyama Sta. on the Keio Line  
5-11 p.m. (Last order 10:30 p.m.)  
Tuesday and special occasions  
03-6909-0029  
MAP A-1

**Savor the king of wagyu Japanese beef**  
**Gyusho (Miyazaki Beef Restaurant)** 牛匠

Miyazaki Beef is a popular *wagyu* brand that has won championships at the National Competitive Exhibition of Wagyu several times, which is held every five years. At this restaurant, you can fully enjoy Japan's highest-ranked beef in *yakiniku* (barbecue style).



# Scenery of Four Seasons



©Tokyo Metropolitan Park Association

Setagaya has many large parks, creating a townscape where beautiful scenery is integrated into everyday life. There are great places for viewing cherry blossoms in spring and colorful leaves in autumn, as well as many spots from which you can see Mount Fuji.

## Spread a ground sheet and enjoy a picnic Kinuta Park 碓公園

This is one of the largest parks in Setagaya. There are various areas for fun activities, including a playground for kids, cycling courses. It is also a popular destination for viewing cherry blossoms in spring. The blossoms reach their peak from late March to early April.

🚗 1-1 Kinuta-koen, Setagaya-ku 🕒 20-min. walk from Yoga Sta. on the Den-en-toshi Line  
🆓 Free ☎️ 03-3700-0414 🗺️ B-3



©SETAGAYA



## Landmark of Sengen-jaya Carrot Tower キャロットタワー

The observatory on the 26th floor is free to enter. It is a perfect spot to enjoy the lovely view of Mount Fuji on sunny days in winter. You can also enjoy beautiful evening and night views.

🚗 4-1-1 Taishido, Setagaya-ku 🕒 3-min. walk from Sengen-jaya Sta. on the Setagaya or Den-en-toshi Line 🕒 9:30 a.m.–11 p.m. (The observatory lobby and restaurant have different business hours.)  
🗓️ 2nd Wednesday of each month, New Year holidays  
🆓 Free ☎️ 03-5430-1185 (in Japanese only) 🗺️ D-2



## Houses about 16,000 artworks Setagaya Art Museum 世田谷美術館

Located in a corner of Kinuta Park, where lots of plants and trees create beautiful seasonal changes, this museum houses many artworks, including works by Henri Rousseau. There is a French restaurant, Le Jardin, in the facility.

🚗 1-2 Kinuta-koen, Setagaya-ku 🕒 17-min. walk from Yoga Sta. on the Den-en-toshi Line  
🕒 10 a.m.–6 p.m. (Admission until 5:30 p.m.) 🗓️ Monday (or Tuesday when Monday falls on a national holiday), New Year holidays 🎫 Admission prices vary depending on the exhibition.  
🌐 <https://www.setagayaartmuseum.or.jp/en/> 🗺️ B-3



## Stroll along the promenade Iraka-michi Road いらか道

Iraka means “a roof made of *kawara* (Japanese traditional roof tiles).” Uniquely paved with *kawara*, this beautiful promenade stretches from Yoga Station to Setagaya Art Museum. You can see *waka* (traditional Japanese poems) engraved here and there on the tiles. There are also some unique monuments.

🚗 From Yoga Sta. to Setagaya Art Museum 🕒 1-min. walk from Yoga Sta. on the Den-en-toshi Line  
🗺️ B-3



©Tokyo Metropolitan Park Association

## A park to enjoy sports Komazawa Olympic Park

駒沢オリンピック公園

This park was constructed on the site of the 1964 Tokyo Olympics. The vast grounds contain athletics tracks, baseball fields, tennis courts, and the Tokyo Olympics Memorial Gallery. It also hosts food events such as meat festival and Tokyo Ramen show.

🚗 1-1 Komazawa-koen, Setagaya-ku 🕒 15-min. walk from Komazawa-daigaku Sta. on the Den-en-toshi Line 🆓 Free ☎️ 03-3421-6431 🗺️ C-3



©Tokyo Metropolitan Park Association

## A street lined with beautiful ginkgo trees Ginkgo Trees in Front of Seijo Gakuen

成城学園前のいちよう並木

The road stretching about 120 meters from the Seijo Gakuen school is especially gorgeous with colored leaves in autumn. The trees were planted by the school when it moved to the area, and the locals have been preserving the landscape for more than 90 years. The best season to enjoy the autumn leaves is late November to December.

🚗 6 Seijo, Setagaya-ku 🕒 3-min. walk from Seijogakuen-mae Sta. on the Odakyu Line 🗺️ A-2



## Time for a leisurely walk Cherry Blossoms Along the Senkawa River ...and Godzilla

仙川の桜とゴジラ

Nice walking paths line the Senkawa River, which flows between Soshigaya-okura Station and Seijogakuen-mae Station. In spring, cherry blossoms on both sides of the river are reflected on the surface of the water, creating a gorgeous view. Toho Studios, where many famous movies have been made, is located by the river. You can see a bronze statue of Godzilla there.



©SETAGAYA

🚗 1-4-1 Seijo, Setagaya-ku (Toho Studios)  
🕒 10-min. walk from Seijogakuen-mae Sta. on the Odakyu Line 🗺️ A-3



## Mount Fuji can be seen on a clear winter day Kitazawa Hachiman-jinja Shrine 北澤八幡神社

Said to enshrine the guardian deity of Setagaya's northern area, this shrine throngs with people at the Autumn Festival, where 20 portable shrines are paraded around. The gripping scene of the shrines being carried into the grounds is reminiscent of a drawing on a picture scroll.

🚗 3-25-3 Daizawa, Setagaya-ku 🕒 8-min. walk from Ikenoue Sta. on the Inokashira Line, 12-min. walk from Shimo-kitazawa Sta. on the Odakyu or Inokashira Line 🆓 Free ☎️ 03-3422-1370 🗺️ D-2



## A square with splendid keyaki (zelkova) trees Keyaki Hiroba in Front of Equestrian Park 馬事公苑前けやき広場

Equestrian Park was a venue for equestrian events during the 1964 Tokyo Olympics and is scheduled to be a venue again for Olympic and Paralympic Games Tokyo 2020. This entrance to the park is famous for beautiful autumn leaves.

🚗 2-3/2-4 Kami-yoga, Setagaya-ku 🕒 20-min. walk from Sakura-shimmachi Sta. or Yoga Sta. on the Den-en-toshi Line or Kyodo Sta. or Chitose-funabashi Sta. on the Odakyu Line or Kamimachi Sta. on the Setagaya Line

Note: Equestrian Park is scheduled to be a venue for equestrian events (except for cross-country). 🗺️ B-2

